

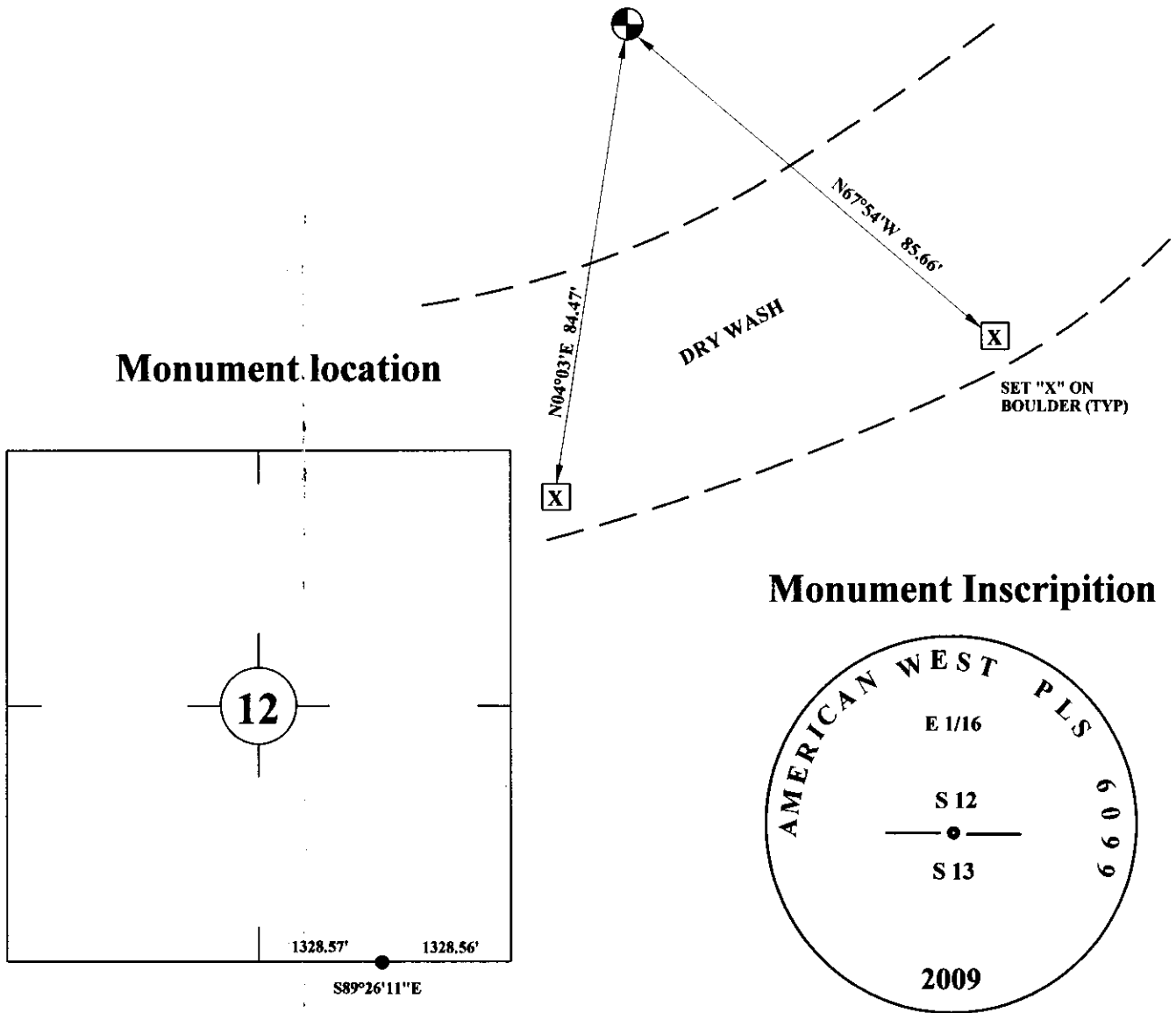
State of Wyoming Corner Record

(In compliance with the *CORNER PERPETUATION AND FILING ACT*, Wyoming Statutes, 1997 Section 33-29-140 et. seq., and the Rules and Regulations of the Board of Professional Engineers and Professional Land Surveyors)

Reverse side of this form may be used if more space is needed.

Record of original survey and citation of source of historical information (if corner is lost or obliterated). Description of corner monumentation evidence found and/or monument and accessories established to perpetuate the location of this corner. Sketch of relative location of monument, accessories, and reference points with course and distance to adjacent corner(s) (if determined in this survey). Method and rationale for reestablishment of lost or obliterated corner.

SET 3/4" X 30" REBAR WITH 2 1/2" ALUMINUM CAP PLS 6099 AT PROPORTIONATE DISTANCE BETWEEN ADJACENT SECTION AND QUARTER SECTION CORNERS. ALSO SET TIES AS SHOWN BELOW.



Monument location

Monument Inscription

2 1/2" ALUMINUM CAP
ON 3/4" X 30" REBAR

Date of Field Work: August 8, 2009

Office Reference: GALLEGOS0809.pro

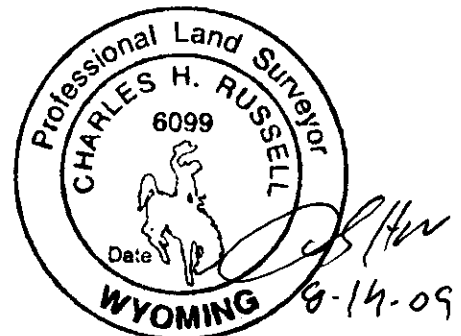
Cross Index Plat

1	2	3	4	5	6	7	8	9	10	11	12	13	14	15	16	17	18	19	20	21	22	23	24	25	
A																									A
B																									B
C		6		5		4		3		2		1													C
D																									D
E																									E
F																									F
G			7		8		9		10		11		12												G
H																									H
J																									J
K																									K
L			18		17		16		15		14		13												L
M																									M
N																									N
O																									O
P				19		20		21		22		23		24											P
Q																									Q
R																									R
S																									S
T				30		29		28		27		26		25											T
U																									U
V																									V
W																									W
X																									X
Y				31		32		33		34		35		36											Y
Z																									Z
1	2	3	4	5	6	7	8	9	10	11	12	13	14	15	16	17	18	19	20	21	22	23	24	25	

Firm/Agency, Address
CHARLES H. RUSSELL P.L.S. 6099
AMERICAN WEST LAND SURVEYING CO.
29 SOUTH 4TH AVENUE
BRIGHTON, CO 80601

Telephone Number:
303-659-1532

This corner record was prepared
by me or under my direction
and supervision.
SEAL & SIGNATURE



RECORDED 9/08/2009 AT 2:36 PM REC# 530142 JK# 2130 PG# 642
DEBRA K. LATHROP, CLERK OF LARAMIE COUNTY, WY PAGE 1 OF 1

Corner Name: East 1/16 Corner to Sections 12 & 13, T 12 N, R 69 W, 6th P.M.

Cross-Index No.: J-24

County: Laramie Wyoming

SBRPEPLS/PLSW: March 1994; PLSW January 1998